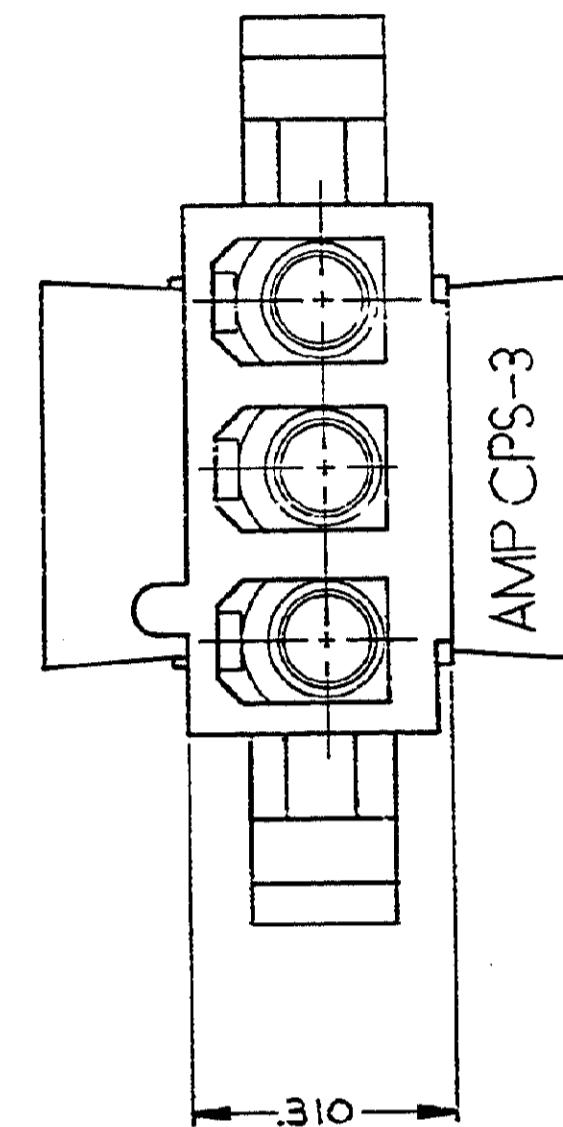
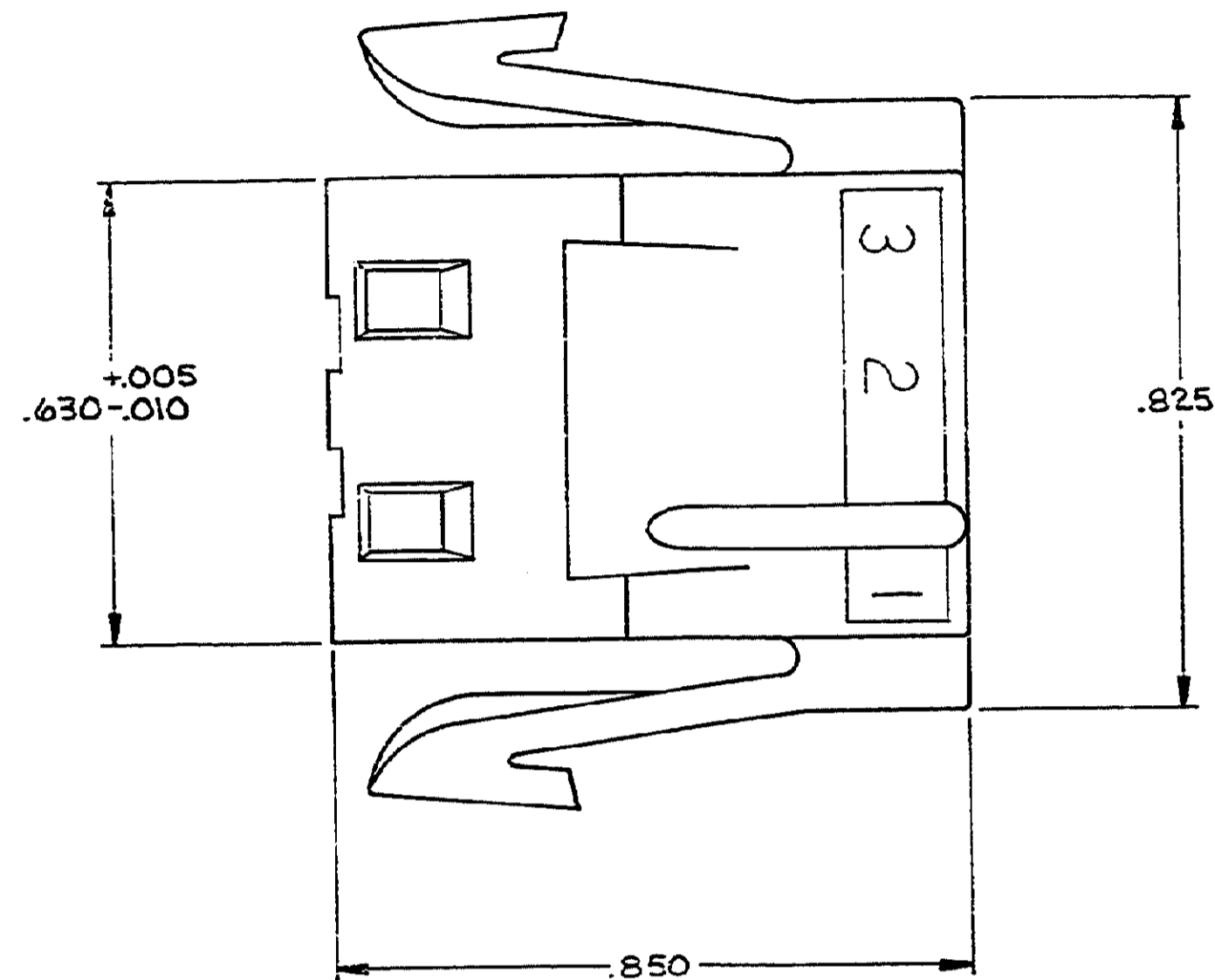
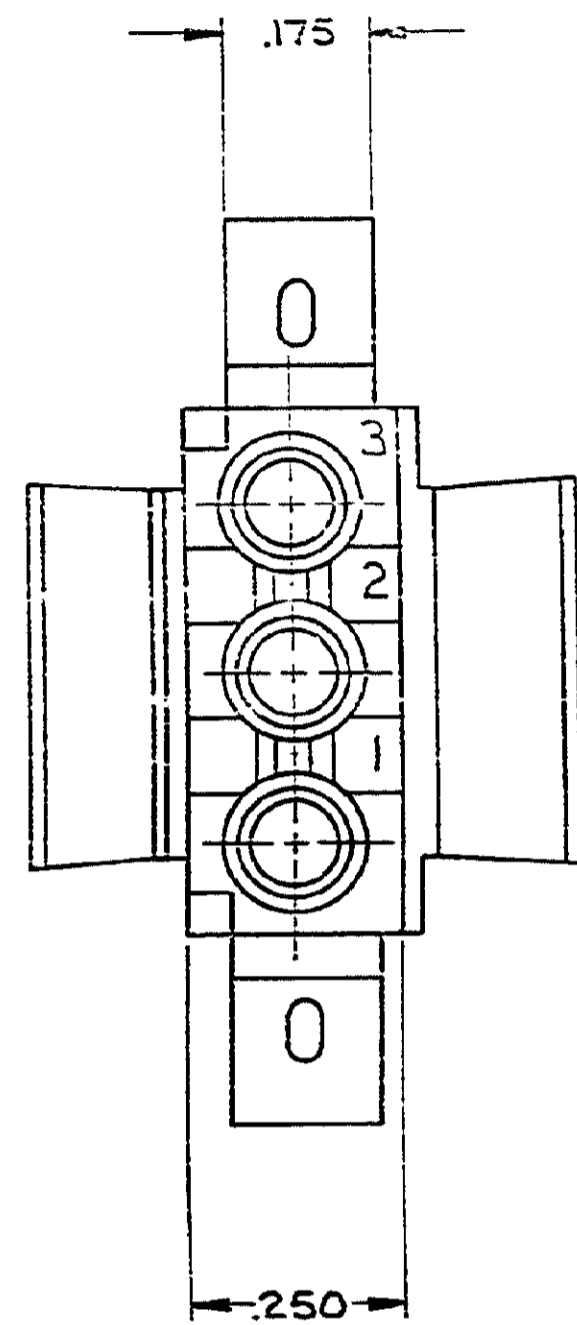
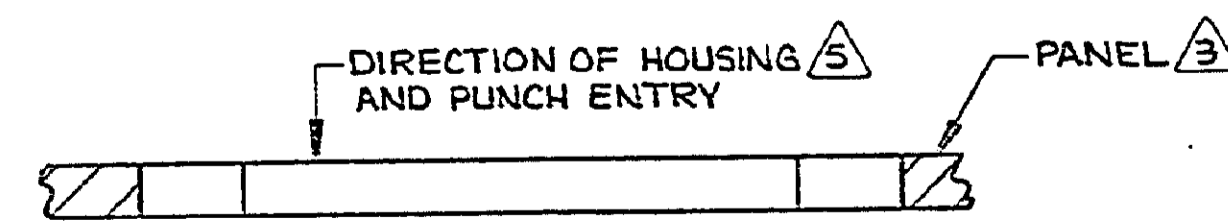
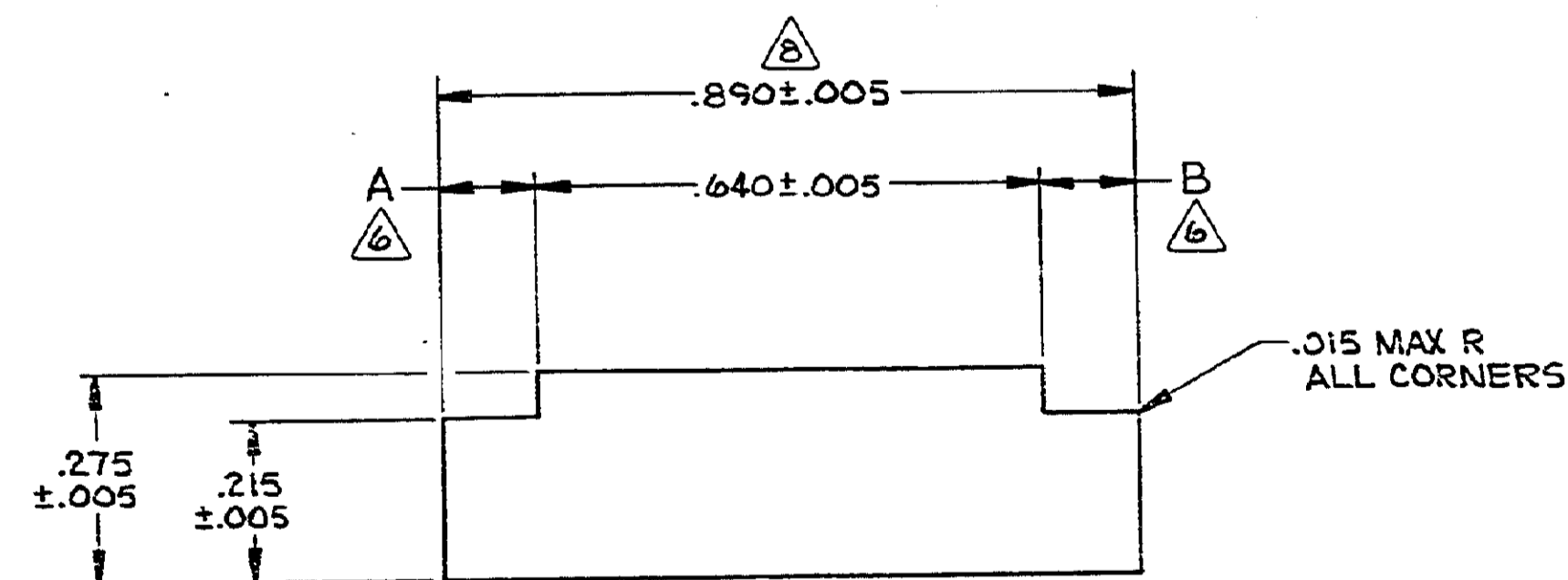


REVISIONS			
REV	ZONE	DESCRIPTION	DATE
U1		REVISED PER ECO-11-005294	11APR11

LOG: JMS
CM: 53



1. MATES WITH CAP PART NUMBER 480305.
2. ACCEPTS MATE-N-LOK SOCKET CONTACTS.
3. RECOMMENDED PANEL THICKNESS .025-.065.
4. BOTH LOCKING LEGS TO BE SQUEEZED TOGETHER AND HOUSING TO BE INSERTED "STRAIGHT-IN" AS OPPOSED TO A ROCKING MANNER OF INSERTION.
5. PANEL MUST BE PUNCHED SO THAT THE HOUSING ENTERS THE PANEL IN THE SAME DIRECTION AS THE PUNCH.
6. DIMENSIONS A AND B TO BE EQUAL WITHIN .005.
7. PANEL MUST NOT HAVE ANY MATERIAL (PAINT, PORCELAIN, ETC.) APPLIED IN THE MOUNTING HOLE AREA THAT WOULD DECREASE RETENTION OF THE HOUSING IN THE PANEL.
8. IF NOTES 5 AND/OR 7 ARE NOT COMPLIED WITH, THE .890 DIMENSION SHOULD BE REDUCED TO .880 TO ASSURE PROPER HOUSING RETENTION IN THE PANEL.



RECOMMENDED PANEL CUTOUT

UNLESS OTHERWISE SPECIFIED DIMENSIONS ARE IN INCHES. TOLERANCES ON: DECIMALS ± .010 ANGLES =		CONTRACT NO.	
MATERIAL		DR <i>White</i> 5-30-86	
FINISH		CHK <i>R. Sherry</i> 6-3-86	
		APPD <i>M. Sherry</i> 6-3-86	
		DES. APPD	
		OTHER APPD	
COLOR	MATERIAL	PART NO.	
NATURAL	NYLON, UL94V-2	1-480304-0	
STE TE Connectivity			
NAME PLUG, 3 CIRCUIT, MATE-N-LOK™			
SIZE	FSCM NO.	DRAWING NO.	
D	00779	480304	
SCALE 5:1		SHEET 1 OF 1	